

BUILDING PROGRAM DISTRIBUTION QUESTIONS

What are the ideal spatial adjacencies for each space?

Function of the Boardroom as a Green Room :

Does the Boardroom need to have direct access to the Rehearsal Room to serve as a separate entry for performers during performances?

Can the public and performers share a common main entry to the Rehearsal Room during performances?

Priority of Program for best access to daylight and views? What quality of natural light is desired for each space? Consider framed views out to landscape or views to the sky.

Should any Program spaces open up to an outdoor space and / or courtyard?

Which areas are the most active? Which spaces are quiet or secluded?

Can any Program spaces be more open? Can a Program space be opened up to circulation or other shared spaces to create larger, more flowing volumes?

Which Program spaces need to be secured? Do these spaces always need to be secured or can they be opened up at times to create larger, shared spaces?

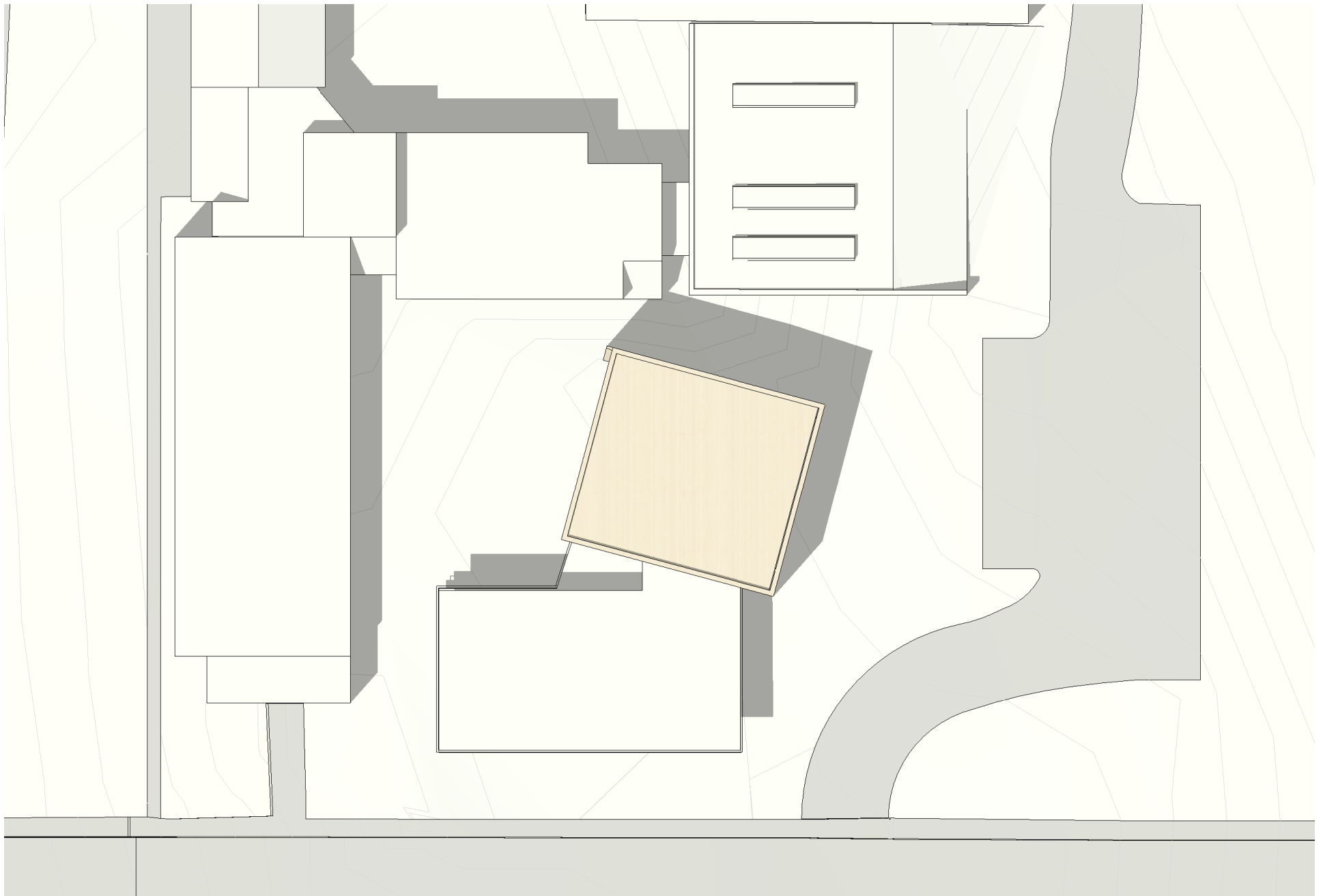
Your program calls for three types of event storage. Are there any important spatial adjacencies needed for each storage type?

Storage B: Festival banners, posters, archival. 8 gorilla racks and 10 file cabinets

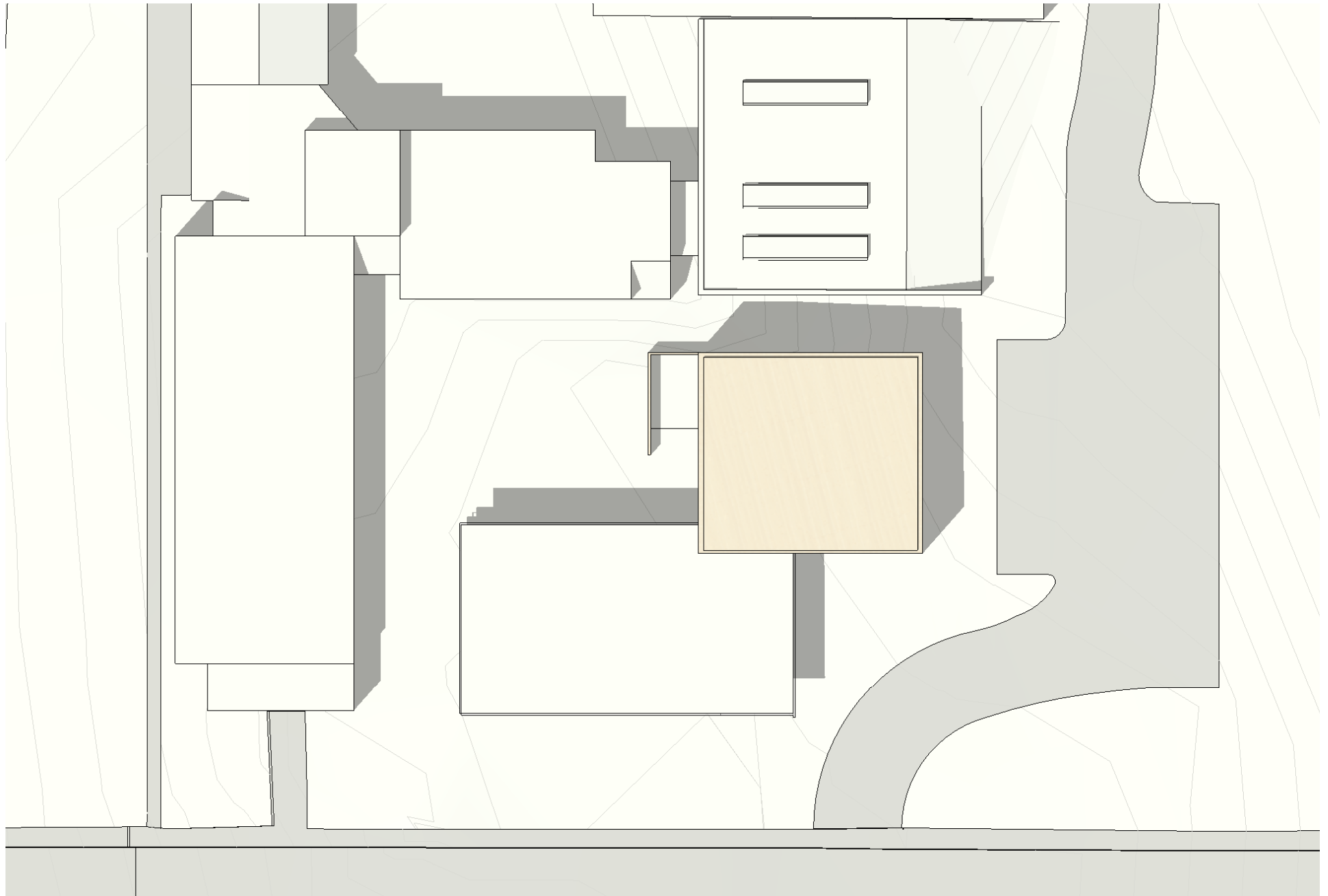
Storage C: stacking chairs, music stands, racks and tables

Storage D: instrument storage with humidity and temperature control

PREVIOUS SKEWED REHEARSAL



EAST - WEST REHEARSAL



NORTH - SOUTH REHEARSAL

